

Installation





Switched-On Schoolhouse 2007 School Edition (SOS) Admin, Teacher, and Student are all easy to install on your computer. Before inserting the installation disc, check to make sure your computer meets the recommended minimum system requirements, ensuring that the program will run at its best.

Recommended Minimum System Requirements for the Server

The recommended minimum system requirements for the server are:

- 2.4 GHz processor
- 512 MB RAM (1 GB is recommended)
- 2 – 120 GB mirrored hard drives
- Windows® 2000 Server or Windows® Server 2003 operating system
- 48x or higher CD-ROM drive
- 10/100 MHz Ethernet interface card
- Integrated sound and video
- Backup capability with tape drive, CD-RW DVD, or external USB hard drive

Recommended Minimum System Requirements for the Client Computer

The recommended minimum system requirements for the client computer are:

- Pentium® III class processor, 500MHz or better
- Windows® XP Pro, Windows® 2000, Windows® 98 Second Edition
- 256MB of memory
- 200MB of hard disk space
- 800 x 600 or higher resolution monitor, 16 bit color
- CD-ROM drive
- 10/100 MHz Ethernet interface card

NOTE:

The requirements listed above are minimal. Depending on your computer's configuration, you may find it more beneficial to use Switched-On Schoolhouse® 2007 School Edition on a computer exceeding the above requirements (i.e., faster processor speed and more memory). A printer is also highly recommended.

Disc Contents

The Switched-On Schoolhouse® 2007 School Edition Installation disc contains the following folders:

1. **DOTNET** – the files necessary to install Microsoft® .NET Framework 1.1.
2. **IE6** – the files necessary to install Microsoft® Internet Explorer 6.
3. **MDAC** – the files necessary to install Microsoft® Data Access Components 2.8.
4. **MSDE** – the files necessary to install Microsoft® SQL Server Desktop Engine 2000.
5. **MSI** – the files necessary to install Microsoft® Installer 2007
6. **Shockwave** – the files necessary to install Flash™ and Shockwave™.
7. **SOSSAPS** – the files necessary to install SOS.
8. **SOSDB** – the files necessary to install the SOS database.
9. **Tools** – the SOS utility program.

Overview of the Installation Process

In setting up your school, you will be installing SOS in two ways.

1. **Server Installation:** A single server computer will host most of the components of SOS. These include:
 - your school's SOS database (SQL or MSDE), which houses school, teacher, class, and student records;
 - the synchronization and/or remote servers that are needed in setting up a distance learning program (optional);
 - the curriculum files;
 - SOS Admin, Teacher, and Student applications. Once these applications are available on the server, you can then choose to use the network to download the Teacher and Student applications to other (client) computers or have them available on the server as resource and backup.
2. **Client Installation:** Multiple client computers will act as individual workstations for the administrator, teachers, and students in your SOS school. Each client computer accesses the information that it needs from the SOS server database over a network. Most client computers will have only SOS Student installed. Others will be SOS Teacher and/or Admin workstations, depending on your network configuration. You have the option to load SOS Admin, Teacher and Student on any client computer.

This section of the guide walks you through the installation steps for both server and the client computers.

NOTE:

The SOS curriculum files are delivered to you on an external USB hard drive. Installing the curriculum files to a hard drive in the server is the recommended "Best Practice." The curriculum files take approximately 54 GB of hard drive storage space. You may utilize the curriculum files from the external USB hard drive, but this practice may lead to performance problems when using the SOS application.

The SOS installation process consists of two major parts:

1. Server setup
2. Client setup

Server Setup:

The following briefly describes the Server setup process:

1. **Create a Shared Folder** – Create a shared folder on the server for the curriculum files.
2. **Database Setup** – There are two options for installing the SOS database:
 - a. Install both Microsoft SQL Server Desktop Engine (MSDE) and the SOS database to run under MSDE.
 - b. Install the SOS database only; you already have Microsoft SQL server installed.
3. **Application Setup** – Install all three applications on the server. This is the default setup.
4. **Copy Curriculum Files** – Copy the curriculum files from the external hard drive to the shared curriculum folder on the server.

Client Computer Setup:

The following briefly describes the Client computer setup process:

NOTE:

There are two client installation methods.

1. **Client Installation over the Network** – (Recommended) Create a shared folder on the server and install the SOS applications to each computer over the network. See the step-by-step instructions on page 38–39.
2. **Client Installation from disc** – Install the SOS application to each computer with the installation disc.



Items needed for Installation

Please make sure you have the following items available before beginning to install SOS:

- Installation disc
- Curriculum Hard Drive
- Product and License Keys

Create the Shared Curriculum Folder

The following steps are used to create a shared folder where the curriculum files from the external USB Curriculum Drive will be copied in a later step of the server setup. You will need to create the shared folder in a location that has a minimum of 55 GB of free drive space. In the following steps, a shared folder is created on the Local Disk (C:). The location of the shared folder may vary for your installation.

Step 1: Open **My Computer**.

Step 2: Click the **Local Disk (C:)**.

Step 3: Click **File**, then on **New**, and then on **Folder**.

Step 4: Name the folder **subjects07**, or something similar.

Step 5: Right-click the new folder and select **Sharing (Sharing and Security)**.

Step 6: Click the option **Share this folder**.

Step 7: Click the **Permissions** button.

Step 8: In the **Permissions** window, uncheck **Full Control** and **Change**. The **Read Only** option remains checked.

Step 9: Click the **Apply** button, then click the **OK** button.

Step 10: Click the **Apply** button, then click the **OK** Button and close the **Properties** window.

This completes the setup of the Shared Curriculum Folder. In a later step of the server setup, you will be given instructions on how to copy the curriculum files from the external USB hard drive to the Shared Curriculum Folder. Next, complete the Database Setup phase.

SOS 2007 Setup

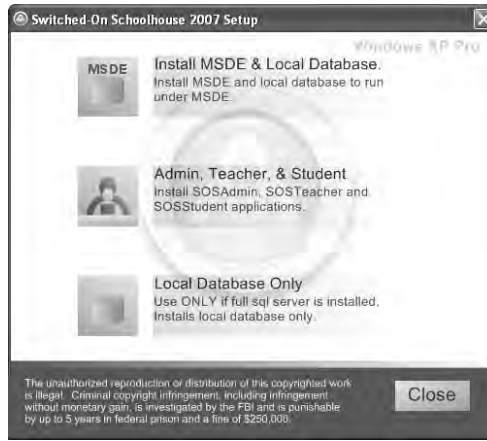
Install MSDE & Local Database

WARNING: During the SOS 2007 install, your computer may restart several times. To prevent loss of data, it is highly recommended you close all other applications during the installation process.

NOTE: If you have previously installed SQL Server, go directly to **Local Database Only** on page 33. You do not need to install MSDE and Local Database.

To install both MSDE and a local database, follow these steps:

Step 1: Insert the Switched-On Schoolhouse® 2007 School Edition (SOS) disc into your CD-ROM drive. When the disc is inserted, the **SOS 2007 Setup** window, shown on the next page, displays. If the **SOS 2007 Setup** window does not display, then go to **Start, Run**, and type **D:\MainSetup.exe**. This assumes that your CD-ROM drive with the installation disc in it is the D drive.



Step 2: Click the first option, **Install MSDE & Local Database**. The **SOS 2007 Installed Products** window displays. This window, similar to the one shown below, indicates which of the required applications are already installed and which you need to install before continuing the installation process.



Step 3: Click the **Install** button. A small **Confirm Installation** pop-up box, similar to the one shown below, displays, indicating which programs will be installed.



Description of Installed Components

Depending on which programs are already installed on your computer, some or all of the following components will be installed:

MICROSOFT WINDOWS® INSTALLER 2.0

If necessary, immediately after you click **OK** (on the **Confirm Installation** pop-up box), Microsoft Windows® Installer 2.0 begins installing automatically. While this piece is installing behind the scenes, you will see very small progress arrows on your screen.

Installation

SOS 2007 MSDE 2000 SERVER

The next application to install is SOS 2007 MSDE 2000 Server, which is also installed automatically. You again see small progress arrows on your screen. After SOS 2007 MSDE 2000 Server has successfully installed, your computer may ask you to restart the system or it may automatically restart without warning.

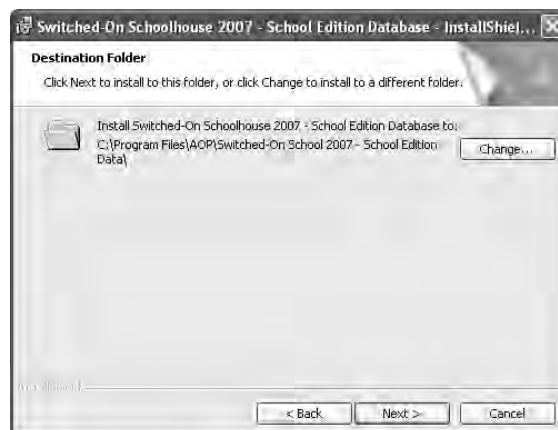
SWITCHED-ON SCHOOLHOUSE® 2007 SCHOOL EDITION SERVER DATABASE

After your computer re-starts (not all operating systems will re-start), the **SOS 2007 Setup** window displays again, with the phrase "Finding Prerequisites." The next application you need to install is the School Edition Server Database. While this application does not install automatically, it does contain an InstallShield® Wizard, which takes you through the installation process step by step.

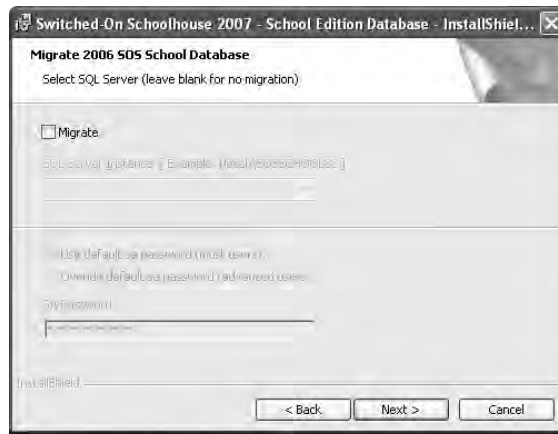
- Step 4:** Click **OK**. The **SOS InstallShield® Wizard** screen (shown below) displays after installing SOS 2007 MSDE 2000 Server.



- Step 5:** Click **Next**. The **Destination Folder** screen displays:



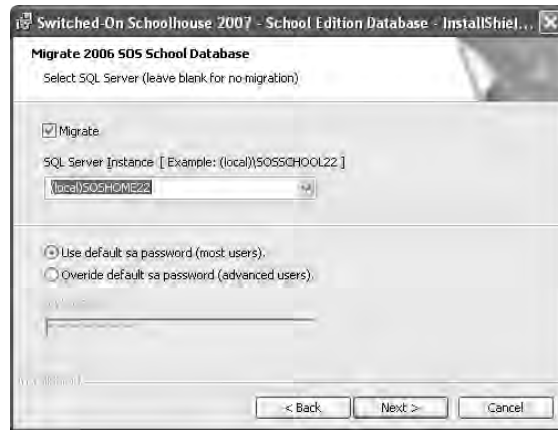
Step 6: Click **Next**. The **Migrate 2006 SOS School Database** screen displays:



NOTE:

At this point you are given the opportunity to migrate the existing SOS 2006 version database. If you choose to migrate, continue with Step 7; otherwise, proceed to Step 9.

Step 7: Click the box next to “Migrate” to migrate a database. Specify the **School Edition Server Instance** either by typing in the Server Instance—(local)\SOSSCHOOL22—or by using the drop-down arrow. Select **Use default sa password**.



Step 8: Click **Next**. Skip to Step 10.

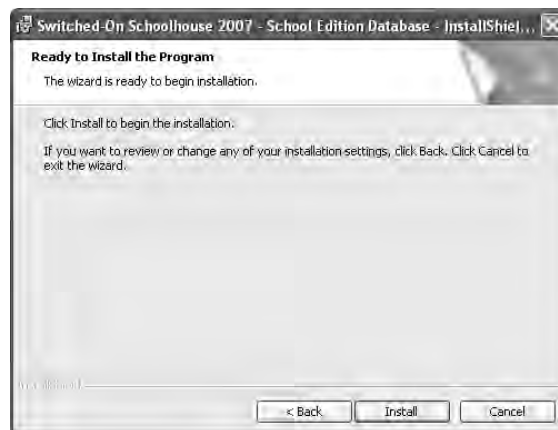
WARNING: Depending on the size of the database being migrated, the time required may be a few minutes to considerably longer. During this process, little activity is visible. Please be patient and do not interrupt the migration process.

Installation

Step 9: The **Setup Admin Account** screen (shown below) displays. Type your Admin password in both the **Admin Password** and **Confirm Password** textboxes.



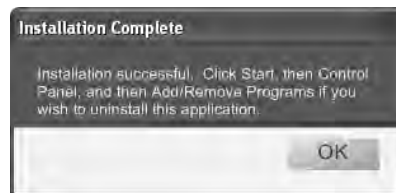
Step 10: Click **Next**. The **Ready to Install the Program** screen displays.



Step 11: Click **Install**. The InstallShield® Wizard begins installing Switched-On School 2007 School Edition Server Database. This process may take up to several minutes. After the Server Database is installed, the **InstallShield® Wizard Completed** screen displays:



Step 12: Click **Finish**. The **Installation Complete** pop-up box displays:



Step 13: Click **OK**. A new **SOS 2007 Setup** window displays, with checkmarks next to all installed applications:

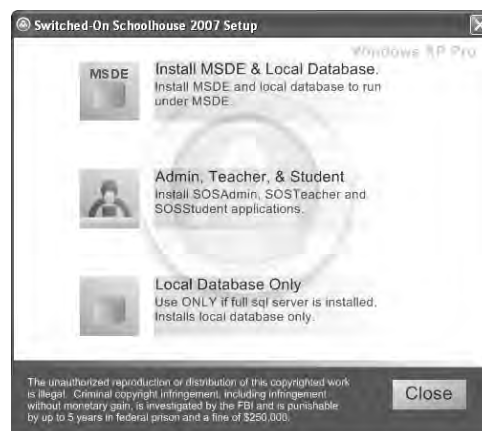


Step 14: This completes the **MSDE and Local Database** setup. Click **Close**. The **SOS 2007 Setup** window displays again. Continue to the next section, **Admin, Teacher, & Student**.

Admin, Teacher, & Student

After your database has been installed, you need to install the SOS Admin, SOS Teacher, and SOS Student applications. Follow these steps to install these applications:

Step 1: Start from the **SOS 2007 Setup** window, shown below.



Installation

Step 2: Click the second option, **Admin, Teacher, & Student**. The **SOS 2007 Installed Products** window displays. This window, similar to the one shown below, indicates which of the required applications are already installed and which you need to install before continuing the installation process.



Step 3: Click the **Install** button. A small **Confirm Installation** pop-up box, similar to the one shown below, displays, indicating which programs are to be installed.



Step 4: Click **OK**.

MICROSOFT WINDOWS® INSTALLER 2.0

Immediately after you click **OK** (on the **Confirm Installation** pop-up box), Microsoft Windows® Installer 2.0 begins installing automatically. While this piece is installing behind the scenes, you see very small progress arrows on your screen.

MICROSOFT® MDAC 2.8

If Microsoft® MDAC 2.8 is not already installed on your computer, the application automatically installs. The same small progress arrows you saw while Microsoft Windows® Installer 2.0 installed appear again. Your computer may automatically restart or ask you to restart once Microsoft® MDAC 2.8 is installed. (This is already installed in the Windows® XP operating system.)

MICROSOFT® IE 6

The third application to install is Microsoft® IE 6. If you do not currently have Microsoft® IE 6 on your computer, follow these steps to install this application after the License Agreement displays:

Step 1: Click next to "**I agree to the terms in the license agreement.**"

Step 2: Click **Next**. Microsoft® IE 6 begins installing.

After Microsoft® IE 6 has successfully installed, your computer may require a restart.

MICROSOFT®.NET FRAMEWORK 1.1 AND MICROSOFT®.NET FRAMEWORK 1.1 SP 1

After your computer re-starts, the **SOS 2007 Setup** window displays again, with the phrase “Finding Prerequisites.” Your computer is now searching for the next installation piece, Microsoft® .NET Framework 1.1 which installs automatically. The same small progress arrows you saw earlier appear again. Your computer restarts after Microsoft®.NET 1.1 SP 1 installs. You see a small window appear. Click **OK**.

MACROMEDIA FLASH™ PLAYER 9/SHOCKWAVE™ 10

The fifth application to install is Flash™ Player 9/Shockwave™ 10, which is installed automatically. You again see very small progress arrows on your screen.

SWITCHED-ON SCHOOLHOUSE® 2007 SCHOOL EDITION

The last application you need to install is the Switched-On Schoolhouse® 2007 School Edition (SOS) application. While this application does not install automatically, it does contain an InstallShield® Wizard, which takes you through the installation process step by step.

- Step 1:** Start from the **SOS InstallShield® Wizard** screen (shown below) which displays as soon as your computer re-starts after installing SOS 2007 MSDE 2000 Server.



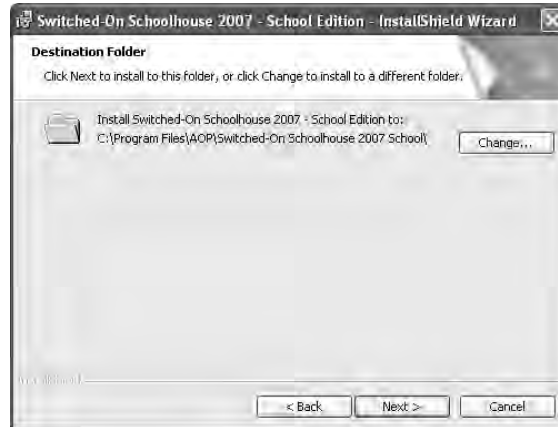
- Step 2:** Click **Next**. The **License Agreement** displays:



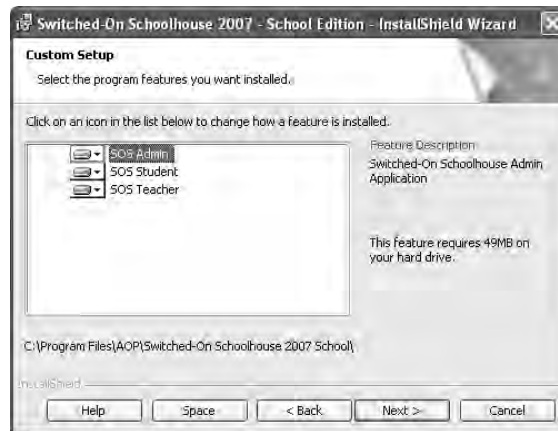
- Step 3:** Click next to “**I agree to the terms in the license agreement.**”

Installation

Step 4: Click **Next**. The **Destination Folder** screen displays:

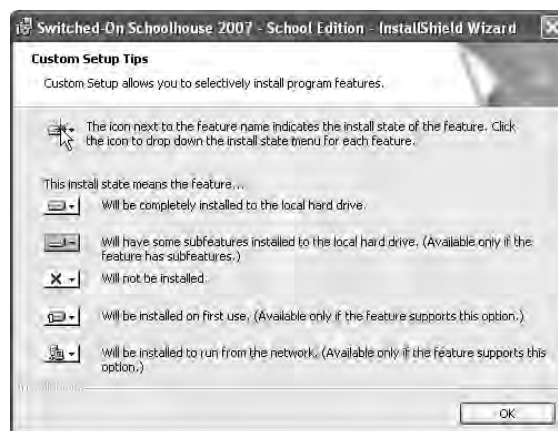


Step 5: Click **Next**. The **Custom Setup** screen displays:

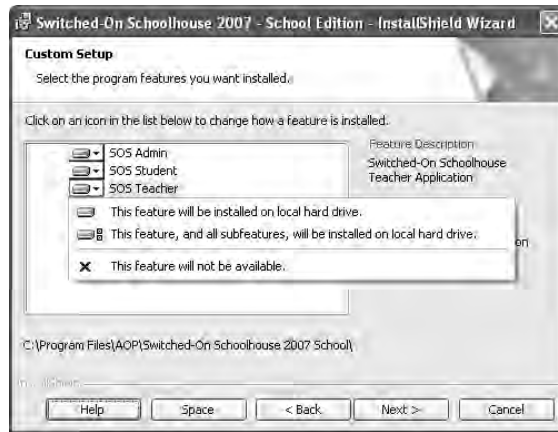


NOTE:

Click **Help** on the **Custom Setup** screen (shown in Step 5) if you do not wish to install all three features. The **Custom Setup Tips** screen (shown below) displays, allowing you to customize what you install:



Determine which features you want to install, and click **OK** to return to the **Custom Setup** screen; then click the down arrow next to the features you do not wish to install (see example below):



Step 6: Click **Next** to install all the chosen applications: SOS Admin, SOS Student, and SOS Teacher on your computer. The **Database Server** window displays:



Step 7: Use the **SQL Server Instance** drop-down menu on the **Database Server** window to locate your SQL Server Instance, or type the name in manually in the blank textbox, such as **Server_Name\SOSSCHOOL22** for an MSDE installation. If using full SQL, then just enter the **Server_Name**.

Step 8: Use the default **sa** (system administrator) password if you have already installed the MSDE SOS school database. (If you are using Microsoft SQL Server, override the default **sa** password and enter your own **sa** password you set up during the SQL Server installation.)

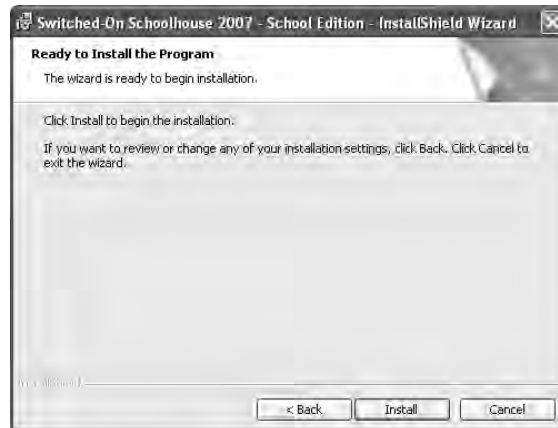
Step 9: Click **Next**. The **Curriculum Location** screen displays:



Installation

NOTE: Click **Change** to browse to your hard drive or type in the correct curriculum location. For example, type in URL address: **server_name\c:\subjects05**, where “server_name” is the actual name of your server which contains the curriculum, and “subjects07” is the name of the shared curriculum folder.

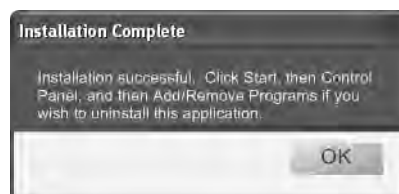
Step 10: Click **Next**. The **Ready to Install the Program** screen displays:



Step 11: Click **Install**. The **InstallShield® Wizard Completed** screen displays after all of your new files are copied:



Step 12: Click **Finish**. Please wait for the installation to complete. This could take several minutes. The **Installation Complete** pop-up box displays:



Step 13: Click **OK**. A new **SOS 2007 Setup** window displays, with checkmarks next to all installed applications:



Step 14: Click **Close**. Icons for each of the features (SOS Admin, SOS Teacher, and SOS Student) you installed are added to your computer's desktop.

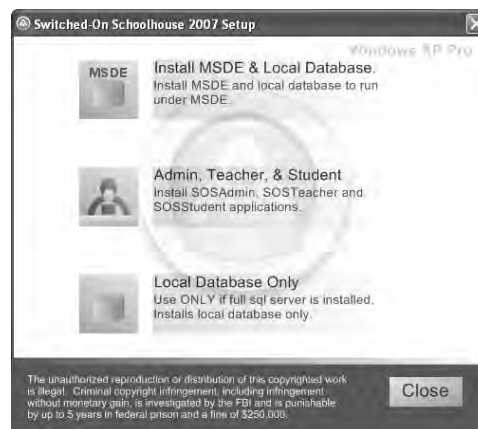
Step 15: Click **Close** again on the **SOS 2007 Setup** screen.

Local Database Only

NOTE: Use this option only if you have an existing installation of SQL Server 2000.

To install a local database only, follow these steps:

Step 1: Start from the **SOS 2007 Setup** window, shown below:

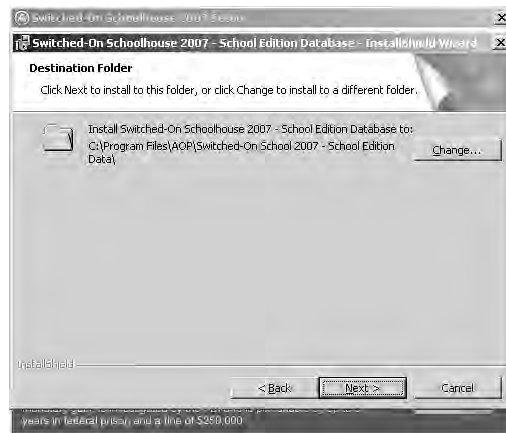


Step 2: Click the last option, **Local Database Only**. The **InstallShield Wizard** screen (shown below) displays:



Installation

Step 3: Click **Next**. The **Destination Folder** screen (shown below) displays:



NOTE: Click **Change** to go to the **Change Current Destination Folder** screen if you want to install to a different folder. Click **OK** when finished.

Step 4: Click **Next**, indicating you want to install Switched-On Schoolhouse® 2007 School Edition to the location shown. The **Database Server** screen displays next:

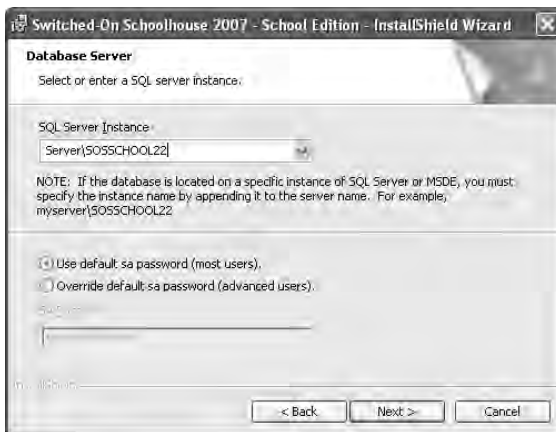


Step 5: Use the drop-down arrow, or type your **SQL Server Instance** in the textbox.

Step 6: Type in your **sa** password.

NOTE: If you do not know your **sa** password, see the section **RESETTING YOUR MICROSOFT SQL SERVER sa PASSWORD**, on page 37 of the document.

Step 7: Click **Next**. The **Migrate 2006 SOS School Database** screen displays. At this point, you are given an opportunity to migrate an existing database. If you are not going to migrate an existing database, continue on to Step 9. Otherwise, click the **Migrate** checkbox.



Step 8: Use the drop-down arrow, or type your **SQL Server Instance** in the textbox. Type in your **sa** password. Click **Next** to migrate your existing database. Proceed to Step 12.

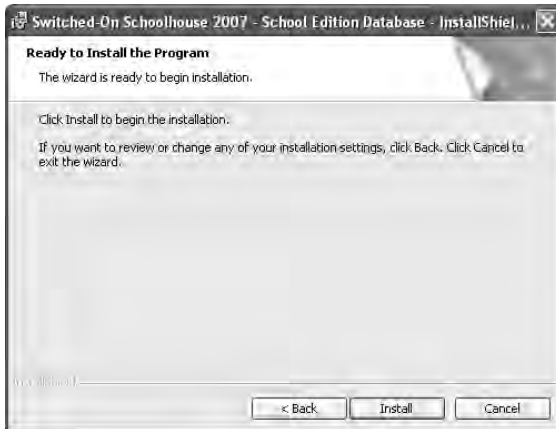
Step 9: If you are not migrating an existing database, click **Next**.

Step 10: The **Setup Admin Account** screen displays:



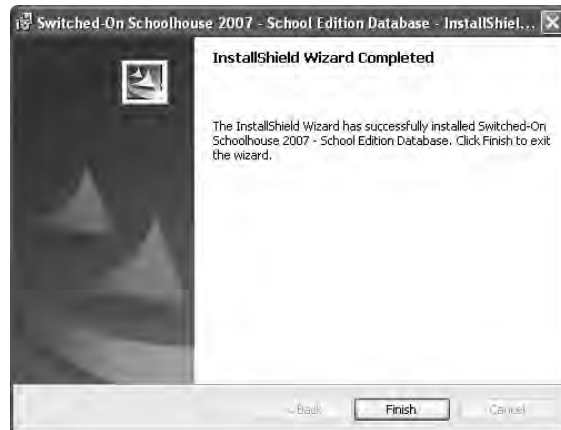
Step 11: Type your Admin password and confirm your Admin password in the textboxes provided.

Step 12: Click **Next**. The **Ready to Install the Program** screen (shown below) displays:



Installation

Step 13: Click **Install**. The **InstallShield Wizard Completed** screen displays after all of your files are copied:



Step 14: Click **Finish**. Your local database is successfully installed.

Copy Curriculum Files

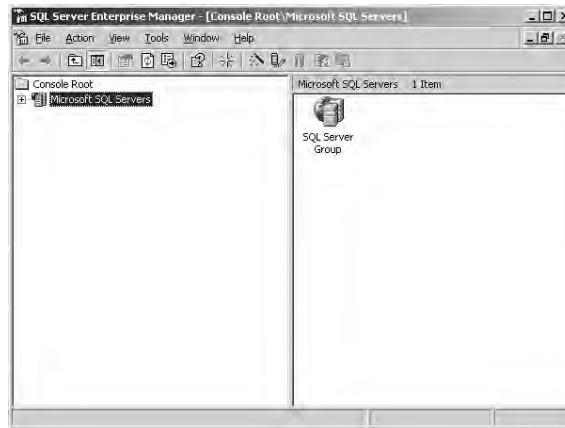
In an earlier step, you created a **Shared Curriculum Folder** on the server. In this step, you copy the curriculum files from the external hard drive to the **Shared Curriculum Folder** location.

- Step 1:** Connect the external USB curriculum hard drive to an available USB connector on the server.
- Step 2:** Plug the external USB drive into power and make sure the drive is turned on.
- Step 3:** The server should automatically sense that the external drive has been connected. If this does not occur, consult the server's setup manual for troubleshooting options.
- Step 4:** When the drive is connected and operating, open **My Computer**.
- Step 5:** Double-click the external USB drive to open it.
- Step 6:** Double-click the **subjects07** folder to open it.
- Step 7:** Click **Edit**, and then click **Select All** to highlight all of the folders within the **subjects07** folder.
- Step 8:** Locate the **Shared Curriculum Folder** that was created in the earlier step (`\\server_name\c:\subjects07`).
- Step 9:** Right-click the **subjects07** folder and select **Paste**. Copying of files to the shared folder location begins. (The copy operation takes several hours or perhaps longer, depending on the type of USB port your server has.)

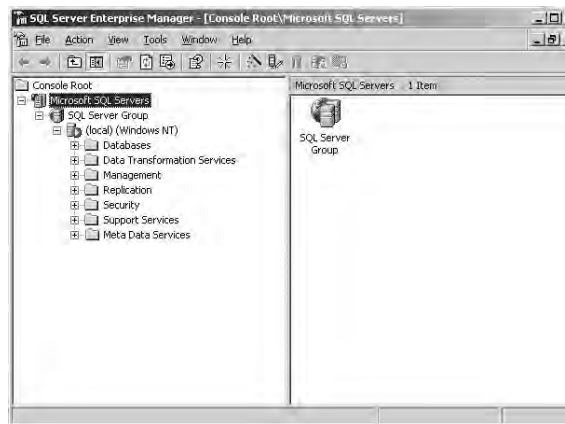
RESETTING YOUR MICROSOFT SQL SERVER SA PASSWORD

If you do not remember the sa password that was set during the installation of Microsoft SQL Server, complete the following steps to reset the password.

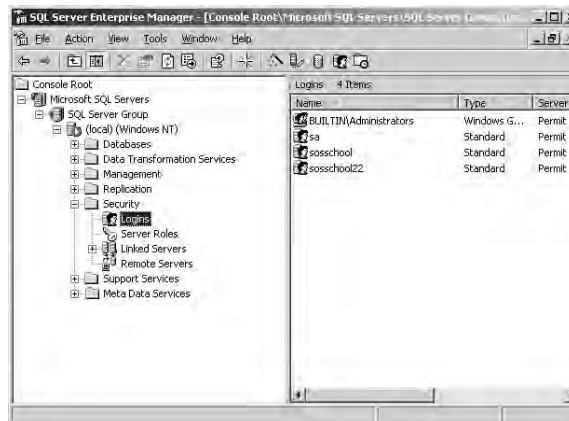
Step 1: Click **Start, All Programs, Microsoft SQL Server, Enterprise Manager**. The window below should appear.



Step 2: Expand the **Microsoft SQL Servers**, the **SQL Server Group**, and the **(local)** SQL Server. See the window below.

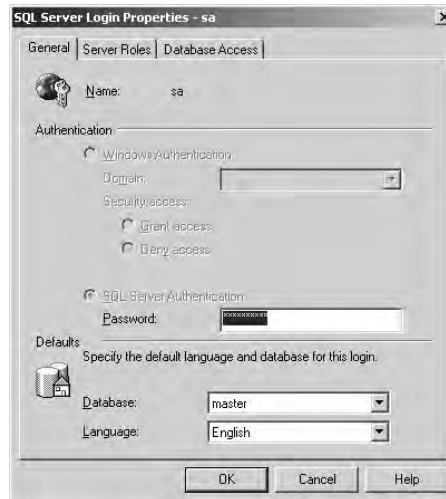


Step 3: Expand the folder **Security** and click **Logins**. See the window below.

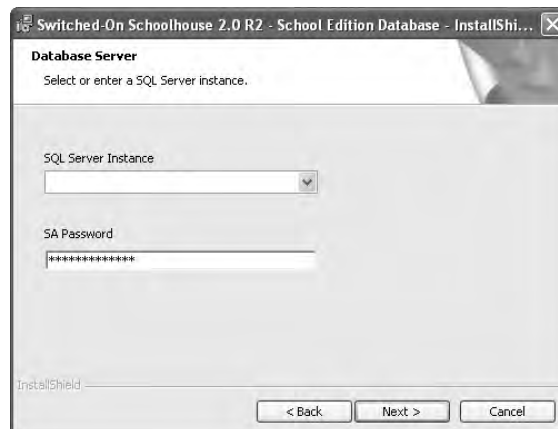


Installation

Step 4: Right-click **sa** and select **Properties**.



Step 5: Type in the new **sa** password in the text box shown below.



Step 6: Click **OK**.

Client Computer Setup

Option 1: Client Installation over the Network

The most convenient way to install the SOS Student application is to perform the installation over the network to each client computer. The following steps outline this type of installation.

NOTE: Steps 1 through 18 below are performed on your network server.

Step 1: Prepare a **Shared Folder** on the **Server**. Open **My Computer**.

Step 2: Open **Local Disk (C:)**.

Step 3: Click **File, New, Folder**.

- Step 4:** Name the folder something like **SOS_2007_Install**.
- Step 5:** Right-click the new folder and select **Sharing and Security**.
- Step 6:** Click the option **Share this folder**.
- Step 7:** Click **Permissions**.
- Step 8:** Click **Remove** to remove the **Everyone Group**.
- Step 9:** Click **Add** and add the **Administrators Group to Share Permissions**.
- Step 10:** Click **Full Control** under **Permissions**.
- Step 11:** Click **Apply** and **OK**.
- Step 12:** Click **Apply** and **OK**.
- Step 13:** Insert the **SOS 2007 Installation disc** into the drive. When the **SOS 2007 Setup** window appears, click **Close**.
- Step 14:** Open **My Computer**. Locate and right-click the **SOS 2007 Installation disc** and select **Explore**.
- Step 15:** From the **Edit** menu, click **Select All**.
- Step 16:** From the **Edit** menu, click **Copy**.
- Step 17:** Locate the folder created in Step 4.
- Step 18:** Right-click the folder and select **Paste**. This copies the contents of the **SOS 2007 Installation disc** to the shared folder.

NOTE: Steps 19 through 25 below are performed on each client computer where you wish to install the SOS applications.

- Step 19:** Log on to the client computer using an administrator account.
- Step 20:** Open **My Computer**. In the address bar, type the URL for the Server (**\\server_name**) and click **Go**.
- Step 21:** The shared folder created in Step 4 should be visible. If not, you need to check the sharing of the folder on the server.
- Step 22:** Open the shared folder and locate the installation file **MainSetup.exe**.
- Step 23:** Double-click **MainSetup.exe** to begin the SOS application installation.
- Step 24:** See the section, **SOS 2007 Setup: Admin, Teacher, & Student**, for detailed application setup steps. You most likely need to install only Teacher or Student on each computer.
- Step 25:** Repeat as many times as necessary to install the SOS application on each client computer.

Option 2: Client Installation from Disc

- Step 1:** Insert the **SOS 2007 Installation disc** into the client computer. The **SOS 2007 Setup** window appears. Follow the steps outlined in the section, **SOS 2007 Setup: Admin, Teacher, & Student**, on page 27 of this reference guide.
- Step 2:** Repeat as many times as necessary to install the SOS application on each client computer.



Troubleshooting

If you experience problems with the install, try the following before calling Technical Support:

- Reboot your computer.
- Close any open applications.
- Disable/turn off any anti-virus software.
- Repeat the installation process a second time.
- Verify that you have the most recent application and curriculum updates by visiting **www.aop.com** and clicking **Tech Support**.
- Visit **www.aop.com/faq** for detailed solutions to software Frequently Asked Questions (FAQs).

Curriculum Installation Errors

If you experience problems installing SOS 2007 curriculum, verify that you have successfully upgraded your current application to Switched-On Schoolhouse® 2007 School Edition.

Before You Call Technical Support

If you need to contact a Technical Support team member, gather the following information before placing your call:

- Determine which version of Windows you are currently using.
- Determine how much RAM and available disk space you have.
- Determine which version of Switched-On Schoolhouse® 2007 School Edition you are using.

NOTE:

To determine which version you are using, click the Schoolhouse logo located on your **Home** screen.