

Installation





Installation

Switched-On Schoolhouse 2008 School Edition (SOS) Admin, Teacher, and Student are all easy to install on your computer. Before inserting the installation disc, check to make sure your computer meets the recommended minimum system requirements, ensuring that the program will run at its best.

Recommended Minimum System Requirements for the Server

The recommended minimum system requirements for the server are:

- 2.4 GHz single core (or 1.6 GHz dual core) or better processor
- 512 MB RAM (1 GB is recommended)
- 2 — 120 GB mirrored hard drives
- Windows® 2003 Server or Windows® Server 2008 operating system
- CD-ROM or DVD ROM drive
- USB 1.1 port (USB 2.0 recommended)
- 10/100 MHz Ethernet interface card
- Super VGA (1,024x768) or higher resolution video adapter and monitor
- Backup capability with tape drive, CD-RW DVD, or external USB or or FireWire hard drive

Recommended Minimum System Requirements for the Client Computer

Requirements	
XP Service Pack 2	Vista (all versions)
Minimum Requirements <ul style="list-style-type: none"> • Microsoft IE 6 or higher • 500 MHz or higher processor • 512 MB Memory (RAM) • 600 MB hard drive space • 1024 X 768 or higher resolution monitor, 16 bit color • CD-ROM drive • Adobe Acrobat Reader • Printer recommended 	Minimum Requirements <ul style="list-style-type: none"> • Microsoft IE 7 or higher • 1 GHz or higher processor • 1 GB Memory (RAM) • 600 MB hard drive space • 1024 X 768 or higher resolution monitor, 16 bit color • CD-ROM drive • Adobe Acrobat Reader • Printer recommended
For optimal performance: <ul style="list-style-type: none"> • Microsoft IE 6 or higher • 1 GHz or higher processor • 512 MB Memory (RAM) • 600 MB hard drive space • 1024 X 768 or higher resolution monitor, 16 bit color • CD-ROM drive • Adobe Acrobat Reader • Printer recommended 	For optimal performance: <ul style="list-style-type: none"> • Microsoft IE 7 or higher • 1.5 GHz or higher processor • 2 GB Memory (RAM) • 600 MB hard drive space • 1024 X 768 or higher resolution monitor, 16 bit color • CD-ROM drive • Adobe Acrobat Reader • Printer recommended

The requirements listed above are minimal. Depending on your computer's configuration, you may find it more beneficial to use Switched-On Schoolhouse® 2008 School Edition on a computer exceeding the above requirements (i.e., faster processor speed and more memory). A printer is also highly recommended.



We do not support a 64 bit operating system.

Overview of the Installation Process

In setting up your school, you will be installing SOS in two ways, a server installation and client installations.

1. **Server Installation:** A single server computer will host most of the components of SOS. These include:
 - your school's SOS database, which houses school, teacher, class, and student records;
 - the synchronization and/or remote servers necessary to set up a distance learning program (optional);
 - the curriculum files;
 - SOS Admin, Teacher, and Student applications. Once these applications are available on the server, you can then choose to use the network to download the Teacher and Student applications to other (client) computers or have them available on the server as resource and backup.
2. **Client Installation:** Multiple client computers act as individual workstations for the administrator, teachers, and students in your SOS school. Each client computer accesses the information it needs from the SOS server database over a network. Most client computers only have SOS Student installed. Others are SOS Teacher and/or Admin workstations, depending on your network configuration. You have the option to load SOS Admin, Teacher and Student on any client computer.

This section of the guide walks you through the installation steps for both server and the client computers.



SOS curriculum files are delivered to you on an external USB hard drive. We highly recommend installing the curriculum files to a hard drive in the server. The curriculum files take about 60 GB of hard drive storage space. You may utilize the curriculum files from the external USB hard drive, but this may lead to performance issues when using the SOS application.

Server Setup:

The Server setup process includes these four basic steps:

1. **Create a Shared Folder** — Create a shared folder on the server for the curriculum files.
2. **Database Setup** — There are two options for installing the SOS database:
 - a. Install both Microsoft SQL Database and the SOS database to run under Microsoft SQL.
 - b. Install the SOS database only; you already have Microsoft SQL server installed.
3. **Application Setup** — Install all three applications on the server. This is the default setup.
4. **Copy Curriculum Files** — Copy the curriculum files from the external hard drive to the shared curriculum folder on the server.

Client Computer Setup:

There are two choices for client installation.

1. **Client Installation over the Network** — (Recommended) Create a shared folder on the server and install the SOS applications to each computer over the network. See the step-by-step instructions on page 32—33.
2. **Client Installation from disc** — Install the SOS application to each computer with the installation disc.

Items needed for Installation

Please make sure you have the following items available before beginning to install SOS:

- Installation disc
- Curriculum Hard Drive
- Product and License Keys

Installation

Create the Shared Curriculum Folder

The following procedure is used to create a shared folder for the curriculum files from the external USB curriculum drive to be copied in a later step of server setup. You need to create the shared folder in a location that has a minimum of 61 GB of free drive space. A shared folder is created on the local drive. The location of the shared folder may vary for your installation.

Step 1: Open **My Computer**.

Step 2: Click the **Local Disk (C:)**.

Step 3: Click **File**, then on **New**, and then on **Folder**.

Step 4: Name the folder **2008_Curriculum** or **Subjects08**, or something similar.

Step 5: Right-click the new folder and select **Sharing (Sharing and Security)**.

Step 6: Click the option **Share this folder**.

Step 7: Click the **Permissions** button.

Step 8: In the **Permissions** window, uncheck **Full Control** and **Change**. The **Read Only** option remains checked.

Step 9: Click the **Apply** button, then click the **OK** button.

Step 10: Click the **Apply** button, then click the **OK** Button and close the **Properties** window.

Your Shared Curriculum Folder is now ready to use. Later, in the server setup, you will see how to copy curriculum files from the external USB hard drive to the Shared Curriculum Folder. Next, complete the Database Setup phase.

SOS 2008 Setup

Install Microsoft® SQL & Local Database

Any time you install multiple services (web, applications, etc.) there is a possibility that one of them may experience problems. Best practices indicate that these services be installed on separate servers to minimize the risk of one corrupted service affecting others. As you decide where to install your SQL Server, we recommend you consider the following:

- Whenever possible, do not install SQL Server on a domain controller.
- Run separate SQL Server services under separate Windows accounts.
- In a multitier environment, run Web logic and business logic on separate computers.

During the SOS 2008 install, your computer may restart several times. To prevent loss of data, it is highly recommended you close all other applications during the installation process.



If you have previously installed SQL Server, go directly to **Local Database Only** on page 29. You do not need to install Microsoft® SQL.

To install both Microsoft® SQL and a local database, follow these steps:

- Step 1:** Insert the Switched-On Schoolhouse® 2008 School Edition (SOS) disc into your CD-ROM drive. When the disc is inserted, the **SOS 2008 Setup** window, shown on the next page, displays. If the **SOS 2008 Setup** window does not display, then go to **Start, Run**, and type **D:\MainSetup.exe**. This assumes that your CD-ROM drive with the installation disc in it is the D drive.



Step 2: Click the first option, **Install Microsoft® SQL & Local Database**. The **SOS 2008 Installed Products** window displays. This window, similar to the one shown below, indicates which of the required components are already installed and which need to be installed before installing the SOS application.



Step 3: Click the **Install** button. A small **Confirm Installation** pop-up box, similar to the one shown below, displays, indicating which programs will be installed.

Immediately after you click **OK** (on the **Confirm Installation** pop-up box), the first needed component begins installing automatically. The components that are required to run SOS include:

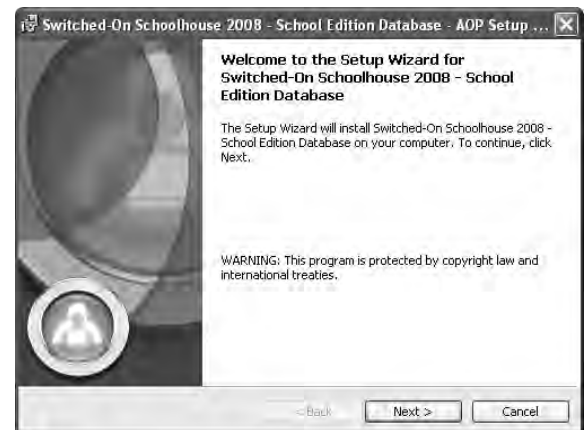
- Microsoft® Windows Installer 3.1
- Microsoft® .NET Framework 2.0
- SOS 2008 SQL 2005 Express Server



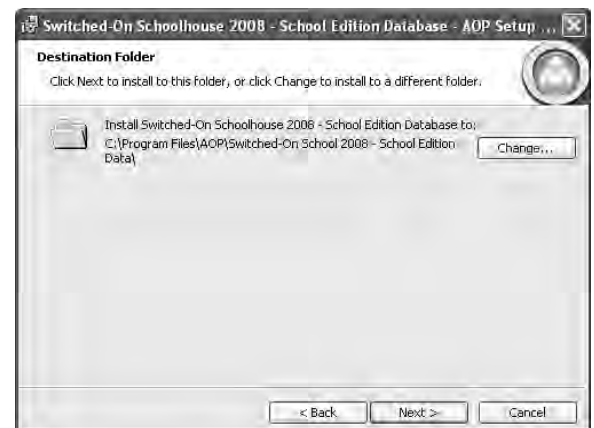
SWITCHED-ON SCHOOLHOUSE® 2008 SCHOOL EDITION SERVER DATABASE

When all of the required components are finished installing, the **SOS 2008 Setup** window displays again. Now it is time to install the **School Edition Server Database**. While it does not install automatically, it does contain a Setup Wizard, which walks you through the installation step by step.

Step 4: Click **OK**. The **AOP Setup Wizard** screen displays.



Step 5: Click **Next**. The **Destination Folder** screen displays:



Installation

Step 6: Click **Next**. The **Migrate 2007 SOS School Database** screen displays:



At this point you are given the opportunity to migrate the existing SOS 2007 version database. If you choose to migrate, continue with Step 7; otherwise, proceed to Step 9.

Step 7: Click the box next to **Migrate** to migrate a database. Specify the **School Edition Server Instance** either by typing in the Server Instance—(local)\SOSSCHOOL22 or by using the drop-down arrow. Select **Use default sa password**.

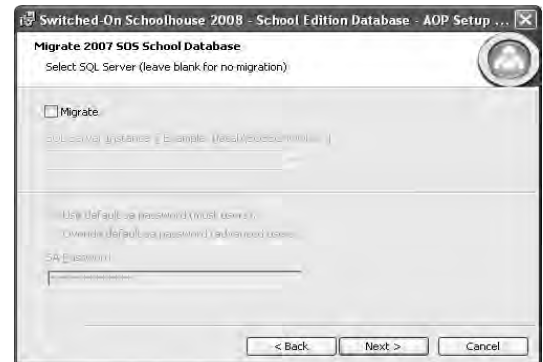
Step 8: Click **Next**. Skip to Step 10.



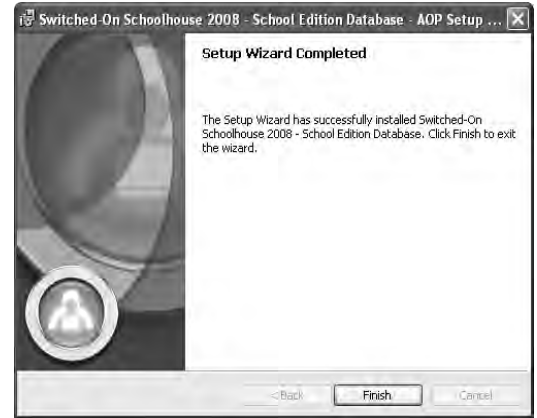
Depending on the size of the database being migrated, the time required may be a few minutes to considerably longer. During this process, little activity is visible. Please be patient and do not interrupt the migration process.

Step 9: The **Setup Admin Account** screen displays. Type your Admin password in both the **Admin Password** and **Confirm Password** textboxes.

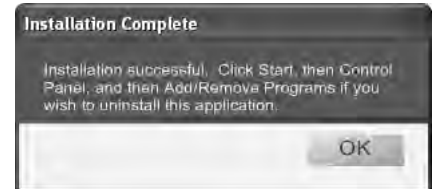
Step 10: Click **Next**. The **Ready to Install the Program** screen displays.



Step 11: Click **Install**. The Setup Wizard begins installing Switched-On School 2008 School Edition Server Database. This process may take up to several minutes. After the Server Database is installed, the **AOP Setup Wizard Completed** screen displays:



Step 12: Click **Finish**. The **Installation Complete** pop-up box displays:



Step 13: Click **OK**. A new **SOS 2008 Setup** window displays, with checkmarks next to all installed applications:

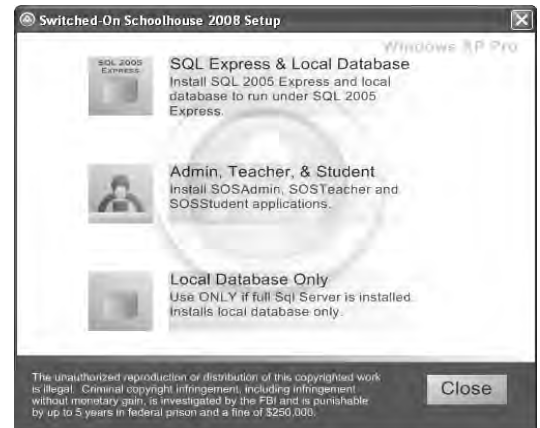


Step 14: This completes the **Microsoft® SQL and Local Database** setup. Click **Close**. The **SOS 2008 Setup** window displays again. Continue to the next section, **Admin, Teacher, & Student**.

Admin, Teacher, & Student

After your database has been installed, you need to install the SOS Admin, SOS Teacher, and SOS Student applications. To install these applications:

Step 1: On the **SOS 2008 Setup** window, click the second option, **Admin, Teacher, & Student**.



Installation

Step 2: The **SOS 2008 Installed Products** window displays. This window, indicates which of the required components are already installed and which need to be installed before the SOS applications are installed.

Step 3: Click the **Install** button. A small **Confirm Installation** pop-up box, displays, indicating which applications (components) will be installed.

Step 4: Click **OK**.

Immediately after you click **OK** (on the **Confirm Installation** pop-up box), the first needed component begins installing automatically. The components required to run SOS include:

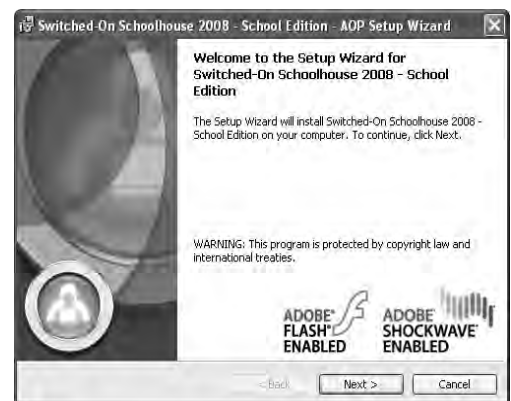
- Microsoft® Windows installer 3.1
- Microsoft® .NET Framework 2.0
- Microsoft® .NET Framework 3.0
- Adobe Flash™ Player 9 / Adobe Shockwave™ 10
- Crystal Reports for .NET Framework 2.0



SWITCHED-ON SCHOOLHOUSE® 2008 SCHOOL EDITION

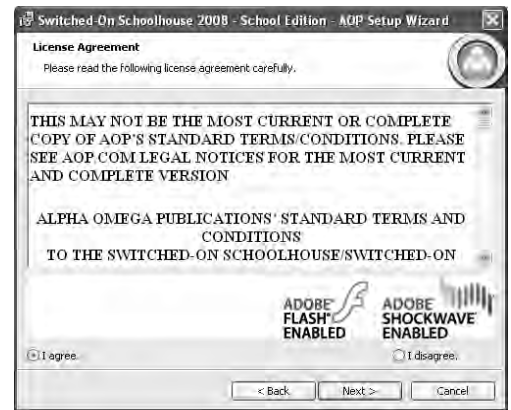
These first components are automatically installed. While Switched-On Schoolhouse® 2008 School Edition (SOS) does not automatically install, it does contain a Setup Wizard, to walk you through the installation process step by step.

Step 1: The **AOP Setup Wizard** screen displays as soon as your computer finishes installing the last of the required components. Click **Next**.

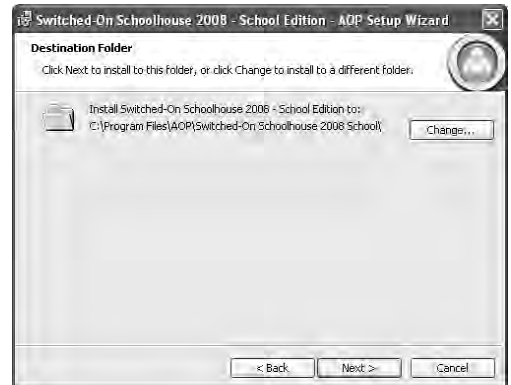


Step 2: The **License Agreement** displays. Click next to “I agree.”

Step 3: Click **Next**.

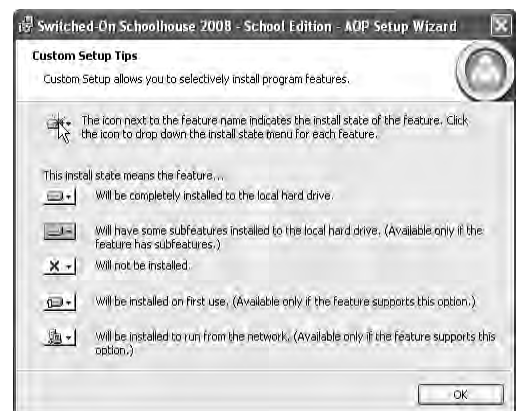
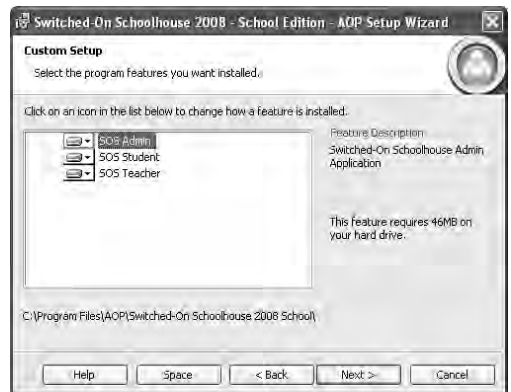


Step 4: The **Destination Folder** screen displays. Click **Next**.



Step 5: The **Custom Setup** screen displays. Click **Help** if you do not wish to install all three features. The **Custom Setup Tips** screen (shown below right) displays, allowing you to customize what you install.

Step 6: Determine which features you want to install, and click **OK** to return to the **Custom Setup** screen; then click the down arrow next to the features you do not wish to install:



Installation

Step 7: Click **Next** to install all the chosen applications: SOS Admin, SOS Student, and SOS Teacher on your computer.

Step 8: The **Database Server** window displays. Use the **SQL Server Instance** drop-down menu on this window to locate your SQL Server Instance, or type the name in manually in the blank textbox, such as **Server_Name\SOSSCHOOL30** for an SQL Express installation. If using full SQL, then just enter the **Server_Name**.

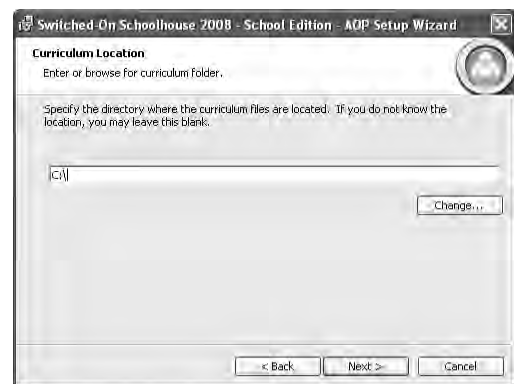
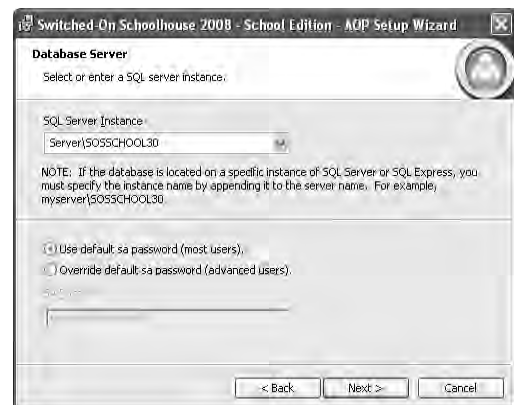
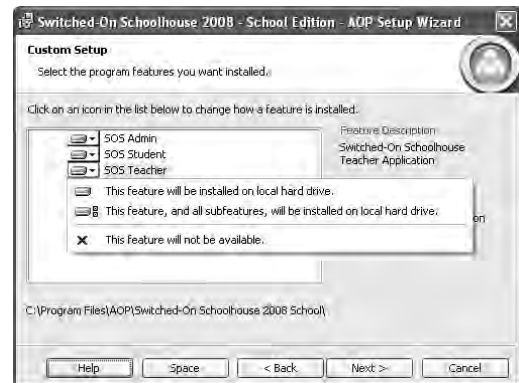
Step 9: Enter the **sa** (system administrator) password you set up during the SQL Server installation.

Step 10: Click **Next**.

Step 11: The **Curriculum Location** screen displays. Click **Next** to proceed or click **Change** to browse to your hard drive or type in the location of your shared curriculum folder.

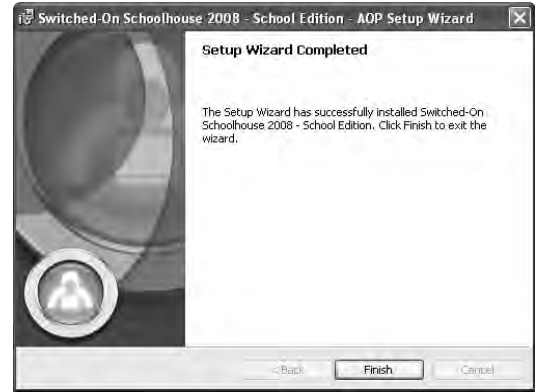
For example, enter **server_name\c:\subjects08**, where “server_name” is the actual name of the server containing your curriculum, and “subjects08” is the name of the shared curriculum folder.

Step 12: The **Ready to Install the Program** screen displays. Click **Install**.

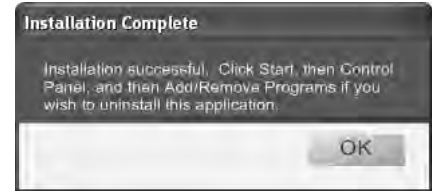


Step 13: The **AOP Setup Wizard Completed** screen displays after all of your new files are copied. Click **Finish**.

This could take several minutes. Please wait for the installation to complete.



Step 14: The **Installation Complete** pop-up box displays. Click **OK**.



Step 15: Click **OK**. A new **SOS 2008 Setup** window displays, with checkmarks next to all installed applications.



Step 16: Click **Close**. Icons for each of the features (SOS Admin, SOS Teacher, and SOS Student) you installed are added to your computer's desktop.

Step 16: Click **Close** again on the **SOS 2008 Setup** screen.

Local Database Only



Use this option only if you have an existing installation of SQL Server 2003 or SQL Server 2008.

To install a local database only, follow these steps:

Step 1: Click the last option, **Local Database Only** on the **SOS 2008 Setup** window. The **Installed Products** screen appears, listing all of the components required to install the database. Already installed items have a checkmark next to them. Unchecked items will be installed.

Step 2: Click **Next**. When all items except the SOS database are installed, the **AOP Setup Wizard** screen displays. This wizard opens and walks you through the installation process for the SOS 2008 database.

Required components include:

- Microsoft® Windows Installer 3.1
- Microsoft® .NET Framework 2.0
- MSXML 6.0 Parser
- Microsoft® Server Native Client
- Microsoft® SQL Server Management Objects Collection
- Switched-On Schoolhouse 2008 - School Edition Database



Installation

Step 2: Click **Next**.

Step 3: The **Destination Folder** screen displays:
Click **Next**, indicating you want to install Switched-On Schoolhouse® 2008 School Edition in the location displayed.

Click **Change** to go to the **Change Current Destination Folder** screen if you want to install to a different folder.
Click **OK** when finished.

Step 4: The **Database Server** screen displays next.
Use the drop-down arrow, or type your **SQL Server Instance** in the textbox.

Step 5: Type in your **sa** password. Click **Next**.

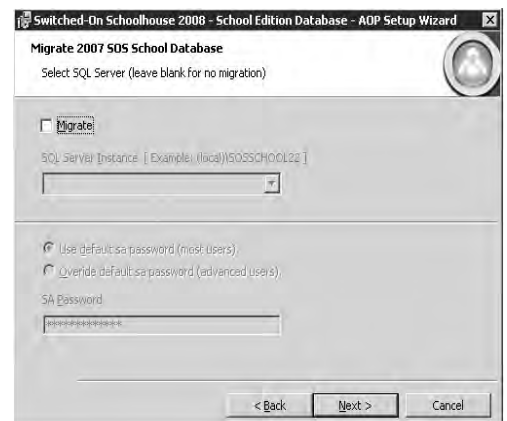
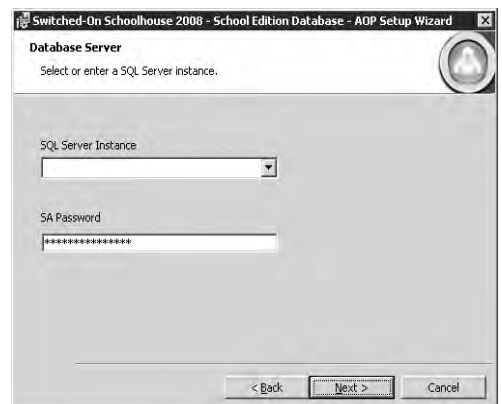
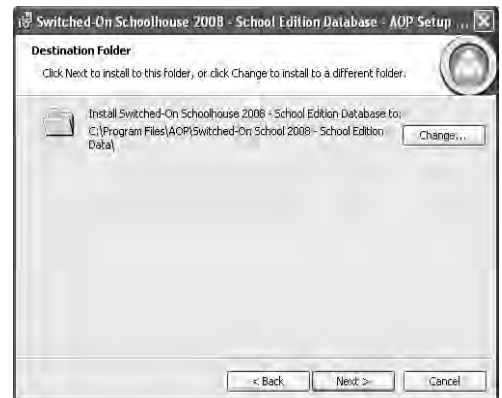
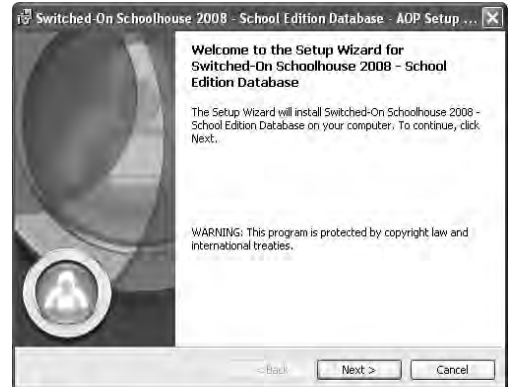


If you do not know your **sa** password, see the section **RESETTING YOUR MICROSOFT SQL SERVER sa PASSWORD**, on page 40 of this document.

Step 6: The **Migrate 2008 SOS School Database** screen displays.
At this point, you are given an opportunity to migrate an existing database. If you are not going to migrate an existing database, continue on to Step 9. Otherwise, click the **Migrate** checkbox.

Step 7: Use the drop-down arrow, or type your **SQL Server Instance** in the textbox. Type in your **sa** password.
Click **Next** to migrate your existing database. Proceed to Step 10.

Step 8: If you are not migrating an existing database, click **Next**.

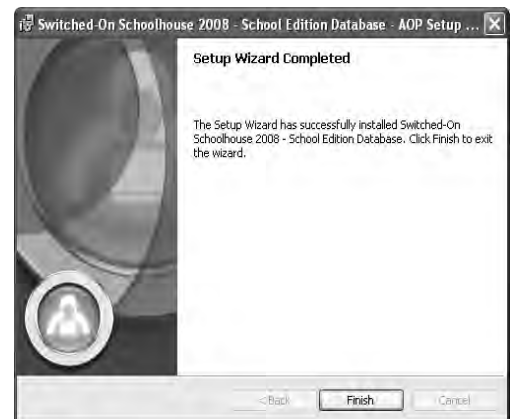
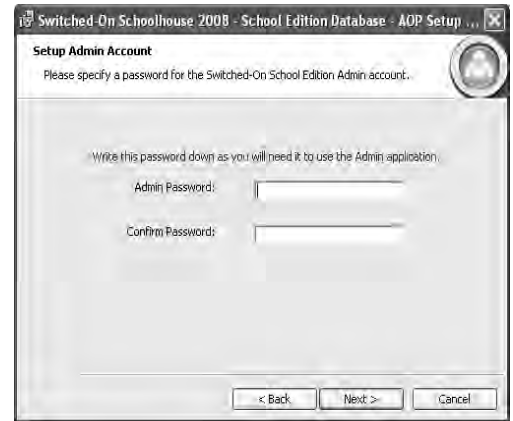


Step 9: The **Setup Admin Account** screen displays. Type your **Admin password** and confirm your **Admin password** in the textboxes provided.

Step 10: Click **Next**.

Step 11: The **Ready to Install the Program** screen displays. Click **Install**.

Step 14: The **AOP Setup Wizard Completed** screen displays after all of your files are copied. Click **Finish**. Your local database is successfully installed.





Installation

Copy Curriculum Files

In an earlier step, you created a **Shared Curriculum Folder** on the server. In this step, you copy the curriculum files from the external hard drive to the **Shared Curriculum Folder** location.

- Step 1:** Connect the external USB curriculum hard drive to an available USB connector on the server.
- Step 2:** Plug the external USB drive into power and make sure the drive is turned on.
- Step 3:** The server should automatically sense that the external drive has been connected. If this does not occur, consult the server's setup manual for troubleshooting options.
- Step 4:** When the drive is connected and operating, open **My Computer**.
- Step 5:** Double-click the external USB drive to open it.
- Step 6:** Double-click the **subjects08** folder to open it.
- Step 7:** Click **Edit**, and then click **Select All** to highlight all of the folders within the **subjects08** folder.
- Step 8:** Locate the **Shared Curriculum Folder** that was created in the earlier step (`\\server_name\c:\subjects08`).
- Step 9:** Right-click the **subjects08** folder and select **Paste**. Copying of files to the shared folder location begins. (The copy operation takes several hours or perhaps longer, depending on the type of USB port your server has.)

Client Computer Setup

Option 1: Client Installation over the Network

The most convenient way to install the SOS Student application is to perform the installation over the network to each client computer. The following steps outline this type of installation.



Steps 1 through 18 below are performed on your network server.

- Step 1:** Prepare a **Shared Folder** on the **Server**. Open **My Computer**.
- Step 2:** Open **Local Disk (C:)**.
- Step 3:** Click **File, New, Folder**.
- Step 4:** Name the folder something like **SOS_2008_Install**.
- Step 5:** Right-click the new folder and select **Sharing and Security**.
- Step 6:** Click the option **Share this folder**.
- Step 7:** Click **Permissions**.
- Step 8:** Click **Remove** to remove the **Everyone Group**.
- Step 9:** Click **Add** and add the **Administrators Group to Share Permissions**.

- Step 10:** Click **Full Control** under **Permissions**.
- Step 11:** Click **Apply** and **OK**.
- Step 12:** Click **Apply** and **OK**.
- Step 13:** Insert the **SOS 2008 Installation disc** into the drive. When the **SOS 2008 Setup** window appears, click **Close**.
- Step 14:** Open **My Computer**. Locate and right-click the **SOS 2008 Installation disc** and select **Explore**.
- Step 15:** From the **Edit** menu, click **Select All**.
- Step 16:** From the **Edit** menu, click **Copy**.
- Step 17:** Locate the folder created in Step 4.
- Step 18:** Right-click the folder and select **Paste**. This copies the contents of the **SOS 2008 Installation disc** to the shared folder.



Steps 19 through 25 below are performed on each client computer where you wish to install the SOS applications.

- Step 19:** Log on to the client computer using an administrator account.
- Step 20:** Open **My Computer**. In the address bar, type the URL for the Server (**\\server_name**) and click **Go**.
- Step 21:** The shared folder created in Step 4 should be visible. If not, you need to check the sharing of the folder on the server.
- Step 22:** Open the shared folder and locate the installation file **MainSetup.exe**.
- Step 23:** Double-click **MainSetup.exe** to begin the SOS application installation.
- Step 24:** See the section, **SOS 2008 Setup: Admin, Teacher, & Student**, for detailed application setup steps. You most likely need to install only Teacher or Student on each computer.
- Step 25:** Repeat as many times as necessary to install the SOS application on each client computer.

Option 2: Client Installation from Disc

- Step 1:** Insert the **SOS 2008 Installation disc** into the client computer. The **SOS 2008 Setup** window appears. Follow the steps outlined in the section, **SOS 2008 Setup: Admin, Teacher, & Student**, beginning on page 25 of this reference guide.
- Step 2:** Repeat as many times as necessary to install the SOS application on each client computer.

Installation

Removing (Uninstalling) Switched-On Schoolhouse® 2008 School Edition

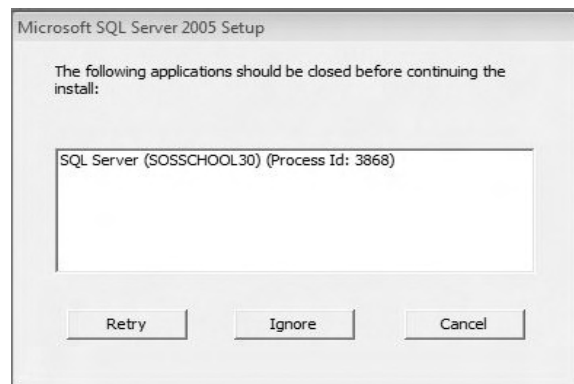
WARNING: It is *critical* when removing (uninstalling) the 2008 version of SOS you follow the steps below *exactly* as written.

1. Open **Add/Remove Programs** in the **Control Panel**.
2. Remove **Switched-On Schoolhouse 2008 – School Edition**.
3. Remove **Switched-On Schoolhouse 2008 - School Edition Database**.
4. Remove **Microsoft SQL Server 2005**.
5. On the **Uninstall** dialog window, select the instance of **SOSSCHOOL30** and **Workstation Components**, and then click **Next**.

XP USERS: Continue with **Step 6** below.

ATTENTION: Vista Users:

At this point in the uninstall process, you will see a dialog box similar to the one below. Click the **Ignore** button to proceed with your uninstall. Do *not* click **Retry** or press your **Enter** key. You will just continue to loop back to this dialog box.



6. Click **Finish** to proceed with the removal process.
7. Once the **SQL Server 2005** uninstall is finished, four SQL components remain in your installed programs list. Remove **Microsoft SQL Server Native Client** next.
8. Remove **Microsoft SQL Server Setup Support Files**. When the warning box appears telling you “This action is only valid for products that are currently installed”, click **OK**.
9. Click **View > Refresh** on the **Add/Remove Programs**
10. Repeat Step 7 for Microsoft **SQL Server VSS Writer** and **MSXML 6.0 Parser**, if necessary.



You **MUST** remove **Microsoft SQL Server 2005** before any of its components are removed or it will not be properly uninstalled and any subsequent installation attempts will fail. If you try to uninstall one of the components first, you will get a warning that the server should be removed first.

Troubleshooting

If you experience problems with the install, try the following before calling Technical Support:

- Reboot your computer.
- Close any open applications.
- Disable/turn off any anti-virus software.
- Repeat the installation process a second time.
- Verify that you have the most recent application and curriculum updates by visiting **www.aopschools.com** and clicking **Tech Support**.
- Visit **www.aopschools.com** for detailed solutions to software Frequently Asked Questions (FAQs).

Curriculum Installation Errors

If you experience problems installing SOS 2008 curriculum, verify that you have successfully upgraded your current application to Switched-On Schoolhouse® 2008 School Edition.

Before You Call Technical Support

If you need to contact a Technical Support team member, gather the following information before placing your call:

- Determine which version of Windows you are currently using.
- Determine how much RAM and available disk space you have.
- Determine which version of Switched-On Schoolhouse® 2008 School Edition you are using.



To determine which version you are using, click the Schoolhouse logo located on your **Home** screen.

